




HBECO





HBECO™





# RIGHT BEHIND YOU SINCE 1958

---

Introducing the stunning new HBECO, a welcome and much requested addition to our HB family of trailers.

Since 1958, people have put their trust in our trailers; just ask an owner- they're not difficult to find. With over 65 years of engineering experience we proudly present this truly exceptional horsebox. As befits the latest addition to the prestigious HB range, the HBECO builds on the decades of expertise and knowledge of Ifor Williams Trailers while simultaneously introducing a striking new design that sets it apart.

The result reflects our investment in new technologies, processes and materials that ensure our products continue to exceed our customers' expectations. For the discerning horse owner, no other horsebox trailer comes close to an Ifor Williams horsebox trailer.

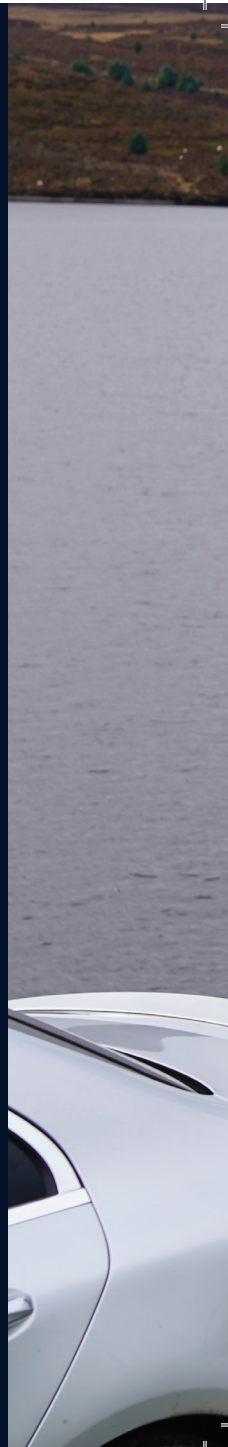
# SUPERBLY ENGINEERED

The new HBECO has been designed with practicality and aerodynamic flow lines that set this horsebox out from the crowd. This superbly engineered horsebox includes all the strength, durability and comfort you would expect from any Ifor Williams Trailers product, and, with a host of intelligent features, the HBECO offers unparalleled value for money as well as best in class residual values that are synonymous with the Ifor Williams Trailers brand.

A high grade extruded aluminium floor brings you peace of mind for your horse's safety while travelling. Robust composite side panels and ramp, fused to the aerodynamic one piece roof delivers a lightweight structure with clean modern lines, making the horsebox easy to tow without compromising on strength. The chassis and body have been designed and engineered with weight and strength considerations at the forefront, providing a safe, strong and solid construction.

Rest assured, the HBECO retains the same undergear and smooth running Paraflex suspension as used on the HB and HBX trailers, ensuring that the renowned towability of Ifor Williams Trailers stays right behind you no matter where your adventures take you.

Our uncompromising commitment to safety means that we subject all of our horsebox trailers to rigorous testing at our own facilities as well as independent test tracks for complete peace of mind.









# DESIGNED FOR YOUR HORSE

The aesthetically engineered HBECO was developed with the objective of producing a stylish trailer, that also offers excellent levels of comfort and safety for your horse. Every detail has been meticulously considered to ensure every journey is smooth, comfortable and effortless.

Carefully selected materials and superb attention to even the smallest detail means our HBECO is safe and strong whilst being extremely attractive on the road. It's all part of our assurance of quality, strength, value and easy maintenance that make Ifor Williams Trailers the go to choice for you and your horse.

HBECO™









# STANDARD FEATURES

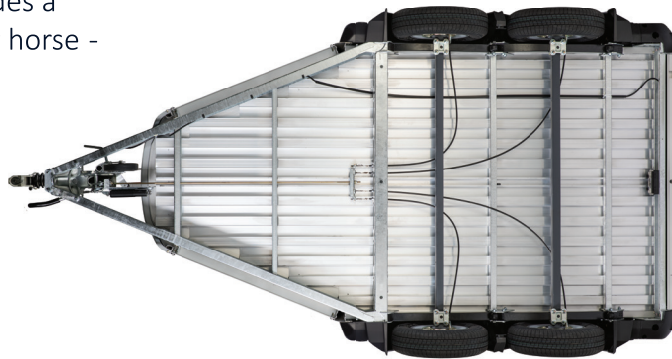
The HBECO has been designed and engineered with weight and strength considerations at the forefront, providing a safe, strong and solid construction. The galvanised steel chassis is designed for a long and trouble free life, whilst substantial high strength extruded aluminium pillars bring all round rigidity to the design.

A key element of safe towing and handling of any trailer is the suspension system. The HBECO uses the Ifor Williams trailers Paraflex suspension system. The superb load distribution and inbuilt shock absorption qualities of the Paraflex system provides a comfortable unwavering ride for your horse - something which was clearly recognized as being the best system on offer when tested independently in Germany.



## One-Piece Roof

The stylish roof provides smooth aerodynamic lines, while its one-piece design provides a joint free solution.



## Galvanised Chassis

Our superbly engineered and manufactured chassis is the robust foundation of all our trailers. As with all Ifor Williams trailers, the HBECO range is built on an advanced galvanised chassis which is designed to provide a smooth and comfortable towing experience for years to come.





### Combined Ramp and Door

Horsebox owners who aim to maximise the versatility of their trailer will appreciate the rear combined ramp and door, which comes as standard.

Operating as a ramp when loading horses, the ramp can also be opened as a side opening door enabling easy cleaning or for a fork lift truck to load heavy items into the horsebox\*. With the centre partition removed, the loading area can be further increased.

\* When using the horsebox for carrying loads other than horses, ensure that the load is evenly distributed over the axles.



# STANDARD FEATURES



**145R13 Wheels**

Provides a lower step in and a shallower loading angle, reduced rolling resistance leading to increased fuel economy.



**Paraflex Suspension System**

The Ifor Williams beam axle and Paraflex suspension system increases stability and reliability, whilst ensuring minimal and affordable maintenance.



**Front Windows**

Two transparent windows at the front of the trailer. The windows have an opening mechanism to provide added ventilation while on the move.



**Aluminium Floor and Rubber Matting**

Aluminium floors fitted as standard. Floors are covered with a 12mm thick removable rubber matting, providing comfort and excellent vibration absorption.

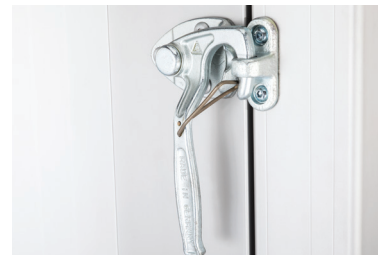






#### **Interior Light**

Essential on dark evenings, when loading and unloading horses.



#### **Rotating Catches**

Sturdy metal handles securely lock the ramp in place.



#### **Step**

Welded ant-slip step conveniently located on the rear of the trailer, to allow the easy operation of rear roller blind (if fitted).

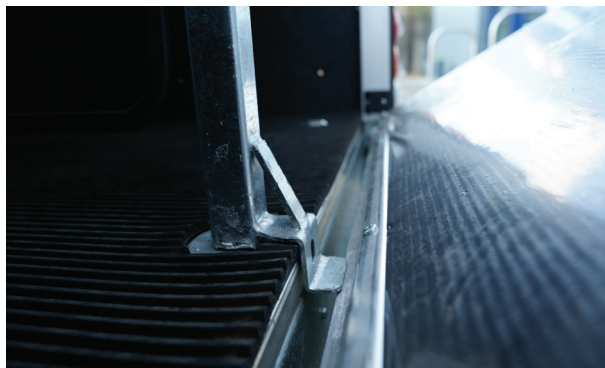


#### **Centre Partition and Interior Kickboard**

Centre partitions come as standard; easily removable so the horsebox can be converted from two stalls into one large stall (additional full width breast/breaching bars required). Hard-wearing plastic kickboards along the sides and rubber skirts along the centre partition provide additional protection for the horse.



# STANDARD FEATURES



**Gas Assisted Spring**

Allows effortless opening and closing of ramp.

**Locking Centre Partition**

Gives added security for your horse in transit.



### **Internal Door Lock (Groom's Door)**

Tough moulded door latch mechanism with a smooth finish to prevent injury to horses. Can be locked externally with a key and unlocked from inside without a key, providing an escape route from the inside when locked from the outside. Also ensures privacy for riders if the trailer is used for changing at a show.



### **Combined Mud Guard and Rear Light Cluster**

Manufactured from tough and impact resistant materials.



### **Breast Bar Release System**

Enables the quick and safe release of breast bars from outside the trailer. Can be operated using the wheel brace supplied with the trailer.





# OPTIONAL EXTRAS

Add some finishing touches to your horsebox with our wide range of additional accessories, many of which are exclusive to Ifor Williams Trailers. From Tack Packs™ to a trailer camera, our accessory options make perfect additions to your horsebox and are ideal gifts for owners if they are not fitted from factory options only..



## **Auto-lift Jockey Wheel**

A popular feature, the auto-lift jockey wheel removes the need to unclamp lift and reclamp the jockey wheel. The operation is completed by turning the handle to raise or lower the jockey wheel without the need to adjust the height position.



## **Full Width Breast and Breaching Bars**

Full width breast and breaching bars for horses that prefer single travel in a wider stall. Centre partition is removed and full width breast and breaching bars are fitted. Only non padded full width breast and breech bars are available.







#### Rear Roller Blind Mesh Screen

Lightweight and easy to use, the roller blind mesh screen adds privacy as well as shelter from the weather. Easily adjustable, the mesh screen can be closed fully or half way.



#### Alloy Wheels

Give your horsebox even more impact by adding a set of exclusive alloy wheels with Ifor Williams Trailers branded centres (four per trailer). The alloy wheel options are available in the larger 165R13 size.

Choose from three designs: 6-spoke silver alloys, 8-spoke silver alloys or 8-spoke diamond cut alloys.



#### Wheel Trims

Add the finishing touches to our standard steel wheels, by fitting a set of wheel trims (four per trailer).

\* Design may vary to the one illustrated.



#### Side Mounted Spare Wheel

Positioned on the side of the trailer with a stylish Ifor Williams Trailers wheel cover for protection.

\* The spare wheel cover is currently only available when one of the larger 165R13C wheel options are fitted.



# OPTIONAL EXTRAS



## Fixed or Wheeled Tack Pack™

We offer two tack pack options to suit your needs. The Fixed Tack Pack (cream) attaches to the groom's door and holds up to two saddles (up to 17" / 43 cm) and other items. We recommend checking saddle fit before purchase.

The Wheeled Tack Pack (silver) fits into the nose area and accommodates saddles up to 18" (46 cm). Again, verifying saddle fit is advised.

Both provide practical, organised storage for your equestrian gear.

## High Level Brake Light

Fitted to the rear roof arch, this optional brake light provides additional warning that the horsebox and vehicle are braking.



## Padded Breast and Breech Bars

Padded breast and breeching bars are available as an option for the extra comfort of your horse. Full width padded breast and breeching bars are not available.



## Trailer Aid

Use it once and you'll never be without it. Use when replacing a flat or punctured tyre. Saves time and energy as there is no need to use a jack.



## Prop stands

Consider prop stands if your horse requires a particularly steady surface to load. Additional support will reassure nervous horses.







#### **Horsebox Cover**

Protect your horsebox from the elements with a waterproof and breathable cover.



#### **Stowage Net**

Ideal for storing manuals and other small items. Fitted in the front of the trailer.



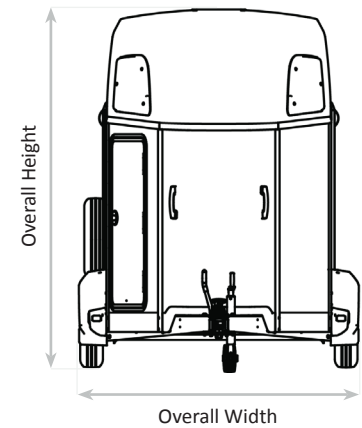
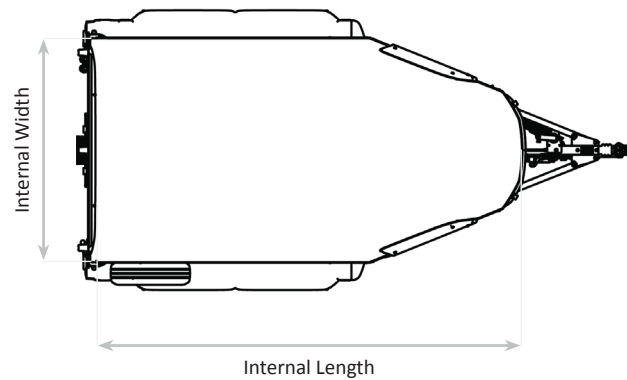
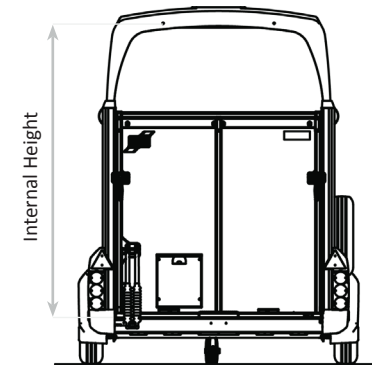
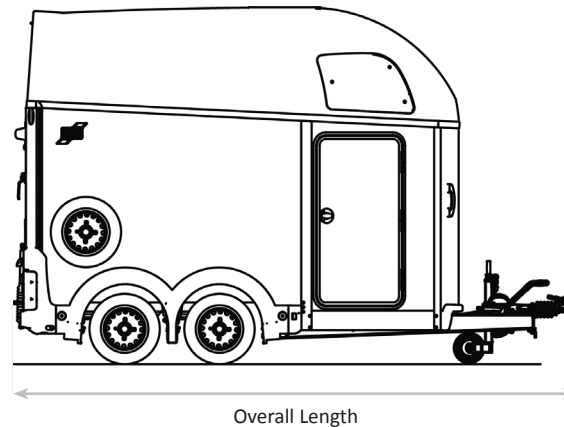
#### **Horse and Trailer Camera**

The wireless camera system transmits live colour footage from the horsebox interior to the towing vehicle. Powered from the horsebox lighting system, passengers can monitor the horse during transit. Supplied loose, requires fitting.



# SPECIFICATIONS

	HBECO
Tyres	145 R13C
Maximum gross weight	2000kg
Unladen weight	775kg
Overall height	2.75m
Overall width	2.14m
Overall length	4.30m
Internal height	2.29m
Internal width	1.67m
Internal length	3.26m
Stall width	0.82m
Stall length min/max	1.43/1.83m
Breast/breeching bar height	0.95/1.27m





# FEATURES

		HBECO
Trailer Features / Options	Combined Ramp and Door (Rear 2-WAY Hinge Ramp/Door)	STD
	Aluminium Floor	STD
	Pressed Steel Coupling	STD
	Galvanised Steel Chassis and Parabolic Beam Axle Suspension	STD
	Interior LED Light	STD
	Removable Rubber Floor Matting	STD
	Opening Side Window Complete with Protection Bars	STD
	Roof Ventilator	OPTION
	Reversing Light	STD
	Centre Roof Mounted Hay Net Tie Ring	STD
	Locking Groom's Door	STD
Centre Partition and Interior Features and Options	Prop Stands	OPTION
	Full Width Breast and Breeching Bars	OPTION
	Padded Breast and Breeching Bars	OPTION
	Quick Release Breast Bar System	STD
	Centre Partition	STD
	Centre Partition Padding	OPTION
	Head Partition	OPTION
	Side Wall Padding	OPTION
	Rear Roller Blind	OPTION
	Stowage Net	OPTION
Wheel Options	Spare Wheel (Steel)	OPTION
	Wheel Trims (For Steel Wheels 4 per Trailer)	OPTION
	6-Spoke Silver Alloy Wheels (4 per trailer)	OPTION
	8-Spoke Silver Alloy Wheels (4 per trailer)	OPTION
	8-Spoke Diamond Cut Alloy Wheels (4 per trailer)	OPTION
	Locking Wheel Bolts (For Alloy Wheels)	OPTION
	Wheel Chocks (Pair)	OPTION
	Lockable Spare Wheel Carrier Kit	OPTION
Finishing Touches / Gift Ideas	Trailer Camera (Supplied loose, requires fitting)	OPTION
	Trailer Cover (Blue)	OPTION
	13 Pin to 7 Pin Towing Electric Plug Adaptor	OPTION
	Coupling Head Security Lock	OPTION
	Trailer Aid	OPTION
	High Level Brake Light	OPTION

## THE IFOR WILLIAMS COMMITMENT TO TRAILER SECURITY

Each trailer is fitted with an ID plate which has a unique serial number etched into it. Additionally, the drawbar has a different unique number cut through it, which is virtually impossible to alter without noticeably affecting the appearance of the numbers and galvanised finish.

## TER - THE NATIONAL PLANT AND EQUIPMENT REGISTER

When you register your new trailer it is automatically registered with TER (The National Plant and Equipment Register). Their mission is to combat plant theft and fraud in the UK and Europe. By registering ownership, both technical and marking details can be made available to international police forces through TER. All Ifor Williams Trailers include free registration to TER once your trailer is registered by your distributor. For further information on TER please see their web site at [www.ter-europe.org](http://www.ter-europe.org)

## DATATAG

Datatag is Europe's leading electronic tagging system and was originally developed to combat theft in the UK motorcycle industry. Datatag tags are miniature RFID transponders. These are hidden deep within the trailer during manufacture, and transmit a unique code that can only be read with special scanning guns. These are issued to Police and HM Customs free of charge. On recovery of a stolen trailer the identity of the trailer can be verified and the rightful owner contacted.

Datatag's European coverage is ever growing - contact them to find out what services they provide in your area. For further information on Datatag please visit their web site at [www.datatag.co.uk](http://www.datatag.co.uk)

## MAINTENANCE

We recommend that your trailer is serviced by a recognised trailer mechanic to ensure it is always kept in best possible condition. All Ifor Williams Trailers distributors provide this service and can advise you on how regularly your trailer will need servicing.

Always clean your trailer regularly, both inside and outside, paying particular attention to the outside during winter months, as salt on the road will discolour the galvanised steel.

**O'R EFAIL I'R BYD**



**WORLDWIDE DISTRIBUTION**



@iforwilliamstrailers

@iforwilliamstrailersaftersales

[www.IWT.co.uk](http://www.IWT.co.uk)